

**vtech**<sup>®</sup>

# Instruction Manual

## Chat & Discover Phone



**VTech understands that a child's needs and abilities change as they grow and with that in mind we develop our toys to teach and entertain at just the right level...**

## **vtech** Baby

**Toys that will stimulate their interest in different textures, sounds and colours**

### **I am...**

...responding to colours, sounds and textures

...understanding cause and effect

...learning to touch, reach, grasp, sit-up, crawl and toddle

**Birth-36 months**



## **Pre-School**

**Interactive toys to develop their imagination and encourage language development**

### **I want...**

...to get ready for school by starting to learn the alphabet and counting

...my learning to be as fun, easy and exciting as can be

...to show my creativity with drawing and music so my whole brain develops

**3-6 years**



## **Electronic Learning Computers**

**Cool, aspirational and inspiring computers for curriculum related learning**

### **I need...**

...challenging activities that can keep pace with my growing mind

...intelligent technology that adapts to my level of learning

...National Curriculum based content to support what I'm learning at school

**4-10 years**



To learn more about this and other VTech® products, visit [www.vtech.co.uk](http://www.vtech.co.uk)

# INTRODUCTION

Thank you for purchasing the **VTech® Chat & Discover Phone**.

The **VTech® Chat & Discover Phone** helps your child learn and discover while exploring and playing with their very own smartphone. Animal contacts and 10 activities introduce numbers, counting, time concepts, music, messages and more! A special microphone feature also allows your child to use voice activation play. They can pretend to call their animal friends and chat with monkey. Are you ready? Just pick up your **Chat & Discover Phone** and start talking!



# INCLUDED IN THIS PACKAGE

- One VTech® Chat & Discover Phone
- One Instruction Manual

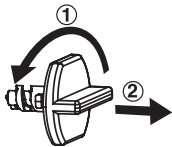
## WARNING:

All packing materials such as tape, plastic sheets, packaging locks, removable tags, cable ties, cords and packaging screws are not part of this toy and should be discarded for your child's safety.

## NOTE:

Please save this Instruction Manual as it contains important information.

## Unlock the packaging locks:

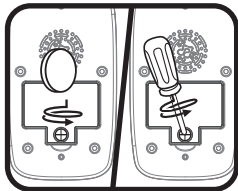


- ① Turn the packaging lock anticlockwise several times.
- ② Pull out the packaging lock and discard.

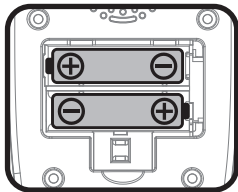
# GETTING STARTED

## BATTERY REMOVAL AND INSTALLATION

1. Make sure the unit is turned **Off**.
2. Locate the battery cover on the back of the unit. Use a screwdriver or coin to loosen the screw and then open the battery cover.
3. If used batteries are present, remove these batteries from the unit by pulling up on one end of each battery.



4. Install 2 new AA (AM-3/LR6) batteries following the diagram inside the battery box. (For best performance, alkaline batteries or fully charged Ni-MH rechargeable batteries are recommended.)
5. Replace the battery cover and tighten the screw to secure.



### **WARNING:**

Adult assembly required for battery installation.  
Keep batteries out of reach of children.

### **IMPORTANT: BATTERY INFORMATION**

- Insert batteries with the correct polarity (+ and -).
- Do not mix old and new batteries.
- Do not mix alkaline, standard (carbon-zinc) or rechargeable batteries.
- Only batteries of the same or equivalent type as recommended are to be used.
- Do not short-circuit the supply terminals.
- Remove batteries during long periods of non-use.
- Remove exhausted batteries from the toy.
- Dispose of batteries safely. Do not dispose of batteries in fire.

### **RECHARGEABLE BATTERIES:**

- Remove rechargeable batteries (if removable) from toy before charging.
- Rechargeable batteries are only to be charged under adult supervision.
- Do not charge non-rechargeable batteries.

## Disposal of batteries and product



The crossed-out wheellie bin symbols on products and batteries, or on their respective packaging, indicates they must not be disposed of in domestic waste as they contain substances that can be damaging to the environment and human health.

The chemical symbols Hg, Cd or Pb, where marked, indicate that the battery contains more than the specified value of mercury (Hg), cadmium (Cd) or lead (Pb) set out in the Batteries and Accumulators Regulation.



The solid bar indicates that the product was placed on the market after 13th August, 2005.

Help protect the environment by disposing of your product or batteries responsibly.

**VTech®** cares for the planet.

Care for the environment and give your toy a second life by disposing of it at a small electricals collection point so all its materials can be recycled.

In the UK:

Visit [www.recyclenow.com](http://www.recyclenow.com) to see a list of collection points near you.

In Australia & New Zealand:

Check with your local council for kerbside collections.

# PRODUCT FEATURES

## 1. ON/OFF BUTTON

To turn the unit **ON**, press the **On/Off Button**. Press the **On/Off Button** again to turn the unit **OFF**.

## 2. BACKLIGHT ON/OFF BUTTON

Press the **BACKLIGHT ON/OFF BUTTON** to turn the screen backlight **ON** and press it again to turn the screen backlight **OFF**.

## 3. 4 CHARACTER BUTTONS

Press one of the 4 **CHARACTER BUTTONS** (Puppy, Lion, Kitty and Elephant) to pretend call the animal friend directly. Speak into the microphone to leave a message.



## 4. ACTIVITY BUTTONS

Press the **ACTIVITY BUTTONS** to play one of the 9 activities.



## 5. SETTINGS BUTTON

Press the **SETTINGS BUTTON** to adjust the screen contrast, background music, light bar and ringtone.



## 6. NUMBER BUTTONS

Press the **NUMBER BUTTONS** to learn numbers or to answer number-related questions.



## 7. LET'S CHAT BUTTON



Press the **LET'S CHAT BUTTON** to enter the Let's Chat activity.

## 8. PHONE CALL BUTTON



Press the **PHONE CALL BUTTON** to make a phone call. You will hear the phone ringing and then be able to pretend to leave a message.

## 9. CANCEL CALL BUTTON



Press the **CANCEL CALL BUTTON** at any time to cancel a phone call and return to the main menu.

## 10. MICROPHONE



This **MICROPHONE** is used for the voice activation feature. The suggested distance to keep between the **MICROPHONE** and your mouth is about 10-12 cm.





## 11. OK BUTTON



Press the **OK BUTTON** to confirm your choice.

## 12. LEFT/RIGHT BUTTONS



Press the **LEFT/RIGHT BUTTONS** to scroll through the activities or menu.

## 13. AUTOMATIC SHUT-OFF

To preserve battery life, the unit will automatically turn **OFF** after several minutes without input. The unit can be turned **ON** again by pressing the **ON/OFF BUTTON**. The unit will also automatically turn **OFF** when the batteries are very low. A warning will be displayed on screen as a reminder to change the batteries.

**Note:** If the unit powers down while playing, we suggest changing the batteries.

**Note:** This toy phone has reduced volume to adhere to safety regulations for close-to-the-ear toys.

## ACTIVITIES:

The **VTech® Chat & Discover Phone** offers animal contacts and 10 activities to play. Activities with  are voice-activated games.

### 1. Call My Friends

Let's call your animal friends. Press the **4 CHARACTER BUTTONS** (Puppy, Lion, Kitty and Elephant) to call them. When you hear a beep, speak into the **MICROPHONE** to pretend to leave a message.



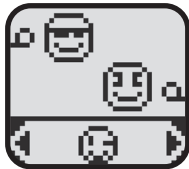
## 2. Camera Fun

Take photos of your animal friends. You will see fun animations of your animal friends. Press the **OK BUTTON** to take a photo.



## 3. Message Box

Let's check your message box! You will receive some messages from your animal friends. Use the **LEFT/RIGHT BUTTONS** and **OK BUTTON** to reply the messages.



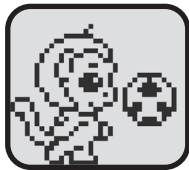
## 4. Music Time

Watch fun animal animations while listening to different music. Press the **NUMBER BUTTONS** to select a melody.



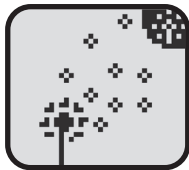
## 5. What's Monkey Doing?

Monkey will do different things at different times. Use the **LEFT/RIGHT BUTTONS** and **OK BUTTON** to select the time and see what monkey is doing at that time.



## 6. Mindful Breathing

Let's do breathing exercises. Practise calming breathing exercises by blowing into the **MICROPHONE** and watching fun animations.



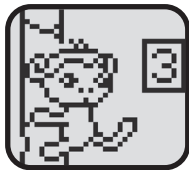
## 7. Counting Game

Monkey is catching bananas in the forest. Count how many bananas he catches. Use the **LEFT/RIGHT BUTTONS** to choose your answer and then press the **OK BUTTON** to confirm. Or press the **NUMBER BUTTONS** to answer directly.



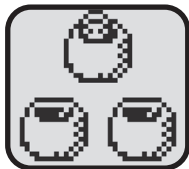
## 8. Pick a Coconut

Monkey is climbing up a coconut tree, numbers are falling down at the side. Press the correct **NUMBER BUTTON** to help the monkey climb to the tree top and pick a coconut.



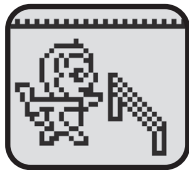
## 9. Hidden Monkey

Let's play hide and seek. Watch carefully, find the coconut that monkey is hiding in. Use the **LEFT/RIGHT BUTTONS** to choose your answer and then press the **OK BUTTON** to confirm.



## 10. Let's Race

It's a hurdle race. Speak into the **MICROPHONE** or press the **OK BUTTON** to help monkey jump over the hurdles and win the race.



## 11. Let's Chat

Monkey loves to chat and will ask you some questions. Speak into the **MICROPHONE** to answer him when you see the light go on.



## CARE & MAINTENANCE

1. Keep the unit clean by wiping it with a slightly damp cloth.
2. Keep the unit out of direct sunlight and away from any direct heat sources.
3. Remove the batteries if the unit will not be in use for an extended period of time.
4. Do not drop the unit on hard surfaces and do not expose the unit to moisture or water.
5. If the unit stops working or malfunctions, install a new set of batteries.

## TROUBLESHOOTING

If for some reason the unit stops working or malfunctions, please follow these steps:

1. Turn the unit **Off**.
2. Interrupt the power supply by removing the batteries.
3. Let the unit stand for a few minutes, then replace the batteries.
4. Turn the unit **On**. The unit should now be ready to use again.
5. If the unit still does not work, install a new set of batteries.

# CONSUMER SERVICES

Creating and developing **VTech®** products is accompanied by a responsibility that we at **VTech®** take very seriously. We make every effort to ensure the accuracy of the information, which forms the value of our products. However, errors sometimes can occur. It is important for you to know that we stand behind our products and encourage you to call our Consumer Services Department with any problems and/or suggestions that you might have. A service representative will be happy to help you.

## **UK Customers:**

Phone: 0330 678 0149 (from UK) or +44 330 678 0149 (outside UK)  
Website: [www.vtech.co.uk/support](http://www.vtech.co.uk/support)

## **Australian Customers:**

Phone: 1800 862 155  
Website: [support.vtech.com.au](http://support.vtech.com.au)

## **NZ Customers:**

Phone: 0800 400 785  
Website: [support.vtech.com.au](http://support.vtech.com.au)

# Product Warranty/ Consumer Guarantees

## **UK Customers:**

Read our complete warranty policy online at [vtech.co.uk/warranty](http://vtech.co.uk/warranty).

## **Australian Customers:**

**VTECH ELECTRONICS (AUSTRALIA) PTY LIMITED –  
CONSUMER GUARANTEES**

Under the Australian Consumer Law, a number of consumer guarantees apply to goods and services supplied by VTech Electronics (Australia) Pty Limited. Please refer to [vtech.com.au/consumerguarantees](http://vtech.com.au/consumerguarantees) for further information.

**Visit our website for more  
information about our products,  
downloads, resources and more.**

***[www.vtech.co.uk](http://www.vtech.co.uk)***  
***[www.vtech.com.au](http://www.vtech.com.au)***

